

STAINLESS STEEL REBAR

High Strength
Excellent Corrossion Resistance Property
Fatigue Test - 5 Million Times
Fundamentally Solve the Durability Problem

FOSHAN SUNDE METAL MANUFACTURE CO,LTD

STAINLESS STEEL REBAR & ACCESSORIES



FOSHAN SUNDE METAL MANUFACTURE CO , LTD

Steel material	EN: 1.4436, 1.4362, 1.4462 UNS: S31603, S32304, S32205
Standard	BS 6744 ASTM A955/A955M GB/T 33959
Diameter	8mm - 50mm

UNS	ASTM	EU Norm	Corrosion Resistance		
			PREn	CPT	CCTL
S31603	316LN	1.4436	25	≈75°F	≈5.3%
S32304	2304	1.4362	26	≈73°F	≈6.5%
S32205	2205	1.4462	35	≈125°F	> 10%

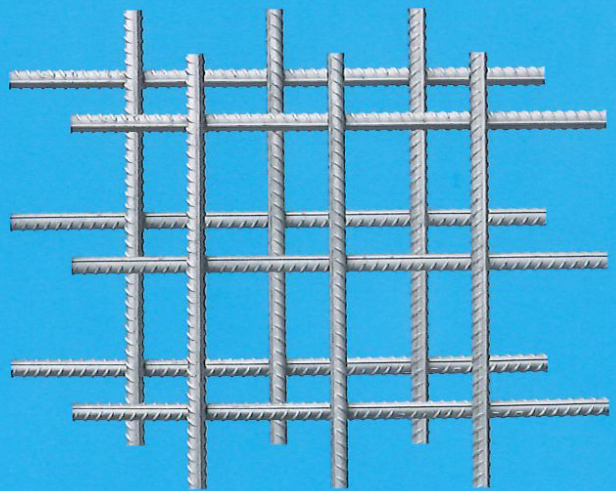
Diameter (mm)		8	10	12	14	16	18	20	22	25	28	32	36	40	50
Weight (kg/m)	1.4436 (316LN)	0.40	0.63	0.91	1.23	1.61	2.04	2.51	3.04	3.93	4.93	6.43	8.14	10.05	15.71
	1.4362 (S32304)	0.39	0.61	0.88	1.20	1.57	1.98	2.45	2.96	3.83	4.80	6.27	7.94	9.85	15.30
	1.4462 (S32205)	0.39	0.61	0.88	1.20	1.57	1.98	2.45	2.96	3.83	4.80	6.27	7.94	9.85	15.30

Available:

- CARES certified stainless steel rebar
- Stainless Steel Binding Wire
- Stainless steel coupler



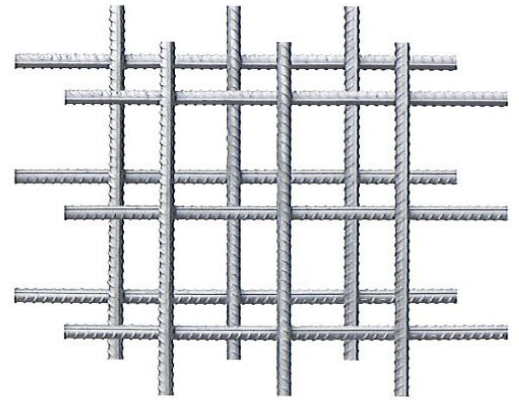
DUPLEX STAINLESS STEEL WELDED FABRIC



FOSHAN SUNDE METAL MANUFACTURE CO , LTD

Duplex stainless steel is a kind of stainless steel with the coexistence of ferrite phase and austenite phase. It has both ultra-high yield strength and chloride stress corrosion resistance.

BS 6744 stainless steel rebar is available in mesh fabric form to BS 4483 fabric sizes.



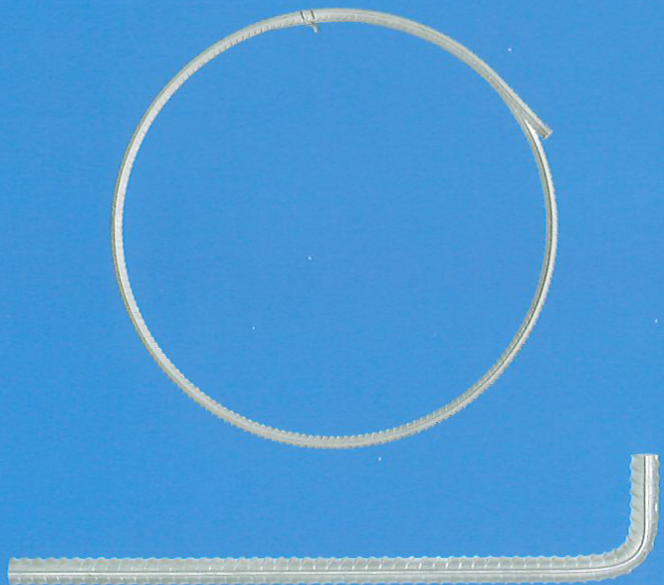
Sunde Steel Designation	EN	ASTM	GB
2304*	1.4362	S32304	S23043
2205	1.4462	S32205	S22253

*2304 is highly recommended due to its high strength, high corrosion resistance property and Cost-effective

BS 4483 Reference	Longitudinal bars			Transverse bars			Mass kg/m ²
	Nominal bar size	Pitch	Area	Nominal bar size	Pitch	Area	
	mm	mm	mm ² /m	mm	mm	mm ² /m	
Square mesh							
A393	10	200	393	10	200	393	6.16
A252	8	200	252	8	200	252	3.95
Structural mesh							
B1131*	12	100	1131	8	200	252	10.9
B785	10	100	785	8	200	252	8.14
B503	8	100	503	8	200	252	5.93
Tolerances							
length and width		±25mm or ±0.5% whichever is the greater					
bar pitch		±10mm or ±5% whichever is the greater					
overhangs		to be agreed at the time of enquiry					

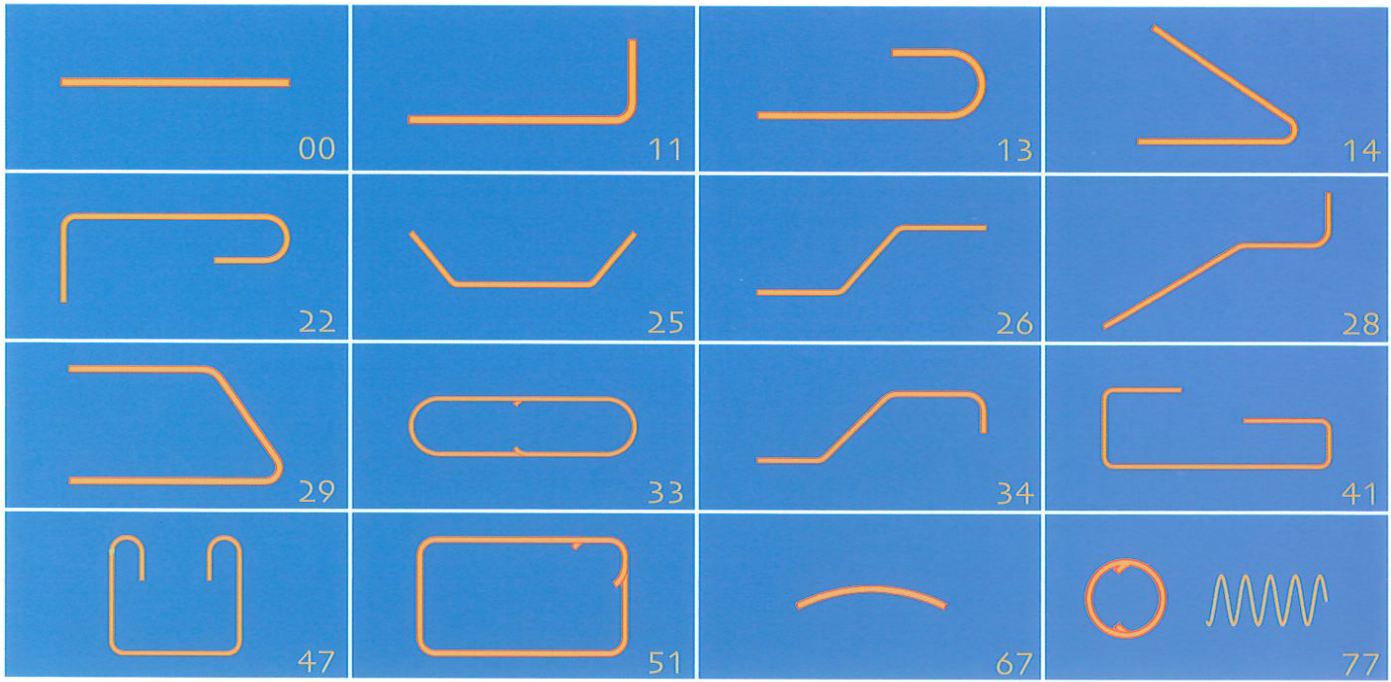
CUT BEND THREAD

Stainless Steel Rebar



FOSHAN SUNDE METAL MANUFACTURE CO , LTD

Regular shape codes to BS8666

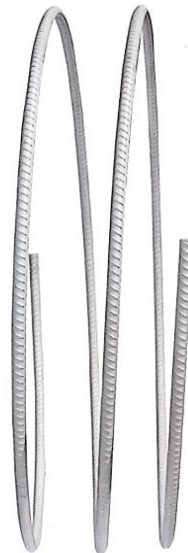


Extra BS 8666 shape codes that are supplied.

Nominal masses

Bar Diameter (mm)	Mass per metre (kg)	Metres per tonne (m)	Cross sectional area (mm ²)
8	0.392	2551	50.3
10	0.612	1634	78.5
12	0.882	1134	113.1
16	1.569	637	201.1
20	2.451	408	314.2
25	3.829	261	490.9
28	4.803	208	615.8
32	6.266	160	804.2
36	8.052	124	1017.9
40	9.790	102	1256.6
50	15.297	65	1963.5

Mass values refer to steel designations 1.4362(s32304).



Dimensional tolerances for cuts and bends

Straight length cutting (including reinforcement for subsequent bending)	±25mm
Bending:	
≤ 1m	±5mm
> 1m ≤ 2m	+5mm -10mm
> 2m	+5mm - 25mm

Sunde also accessible :

- straight lengths up to 15m
- Stainless steel fabric mesh to BS 4483 mesh sizes
- Stainless steel dowel bars and sleeves
- Stainless steel rebar couplers
- Stainless steel wire
- Threaded bar
- Epoxy coated rebar

**STAINLESS
STEEL
REINFORCED
BAR**



CARES CERTIFIED

Steel material	EN: 1.4436, 1.4362, 1.4462, 1.4482 UNS: S31603, S32304, S32205, S32101
Standard	BS 6744 ASTM A955/A955M GB/T 33959
Diameter	8mm - 50mm
Length	12m (Tailored length)

UNS	ASTM	EU Norm	Corrosion Resistance		
			PREn	CPT	CCTL
S31603	316LN	1.4436	25	≈75°F	≈5.3%
S32304	2304	1.4362	26	≈73°F	≈6.5%

Diameter (mm)		8	10	12	14	16	18	20	22	25	28	32	36	40	50
Weight (kg/m)	1.4436 (316LN)	0.40	0.63	0.91	1.23	1.61	2.04	2.51	3.04	3.93	4.93	6.43	8.14	10.05	15.71
	1.4362 (S32304)	0.39	0.61	0.88	1.20	1.57	1.98	2.45	2.96	3.83	4.80	6.27	7.94	9.85	15.30

STAINLESS STEEL DOWEL BAR



FOSHAN SUNDE METAL MANUFACTURE CO , LTD

INTEGRATED SOLUTION FOR DOWEL BAR

Compare with epoxy coated and galvanized dowel bar, stainless steel dowel bar possess excellent properties when facing complex concrete structures and life cycle environment. Furthermore, Sunde provide multiple grades of dowel bar including strength 500Mpa and 250Mpa that can ensure the structure services life over 120 years.



Material	EN: 1.4401/1.4404, 1.4462, 1.4362 ASTM/UNS: 316/316L, S32205, S32304
Steel Grade	Grade 250 Grade 500
Diameter	16mm - 60mm

Diameter (mm)		16	20	25	28	30	32	36	40	50	60
Weight (kg/m)	1.4404 (316L)	1.609	2.514	3.927	4.926	5.655	6.434	8.138	10.053	15.708	22.608
	1.4362 (S32304)	1.569	2.451	3.829	4.803	5.507	6.266	7.930	9.790	15.297	22.028
	1.4462 (S32205)	1.569	2.451	3.829	4.803	5.507	6.266	7.930	9.790	15.297	22.028

				
Qatar Doha Hamad International Airport <i>Epoxy coated dowel bar</i>	Cambodia Phnom Penh International Airport <i>Epoxy coated dowel bar</i>	The Third Runway Of Hong Kong Airport <i>Stainless steel dowel bar</i>	Sharjah-Oman Heavy Truck Expressway <i>Stainless steel dowel bar</i>	Saudi Arabia King Faisal Airbase <i>Epoxy coated dowel bar</i>